

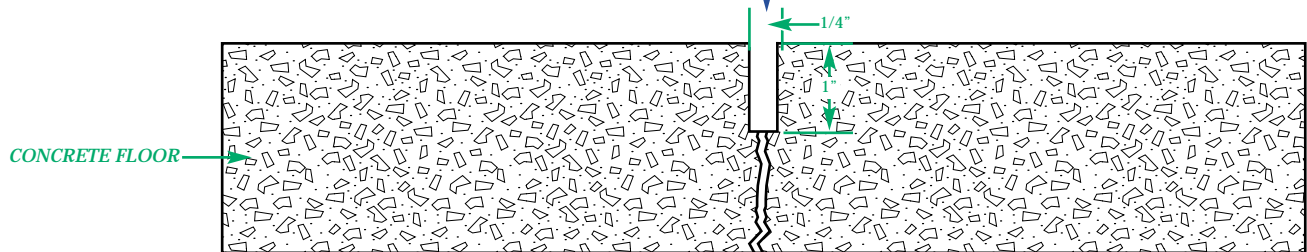
CONTROL JOINT TREATMENT

Exposed Joints

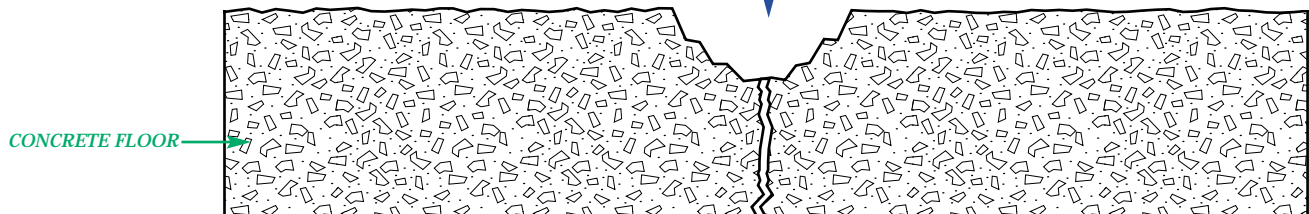
These are non-moving shrink control joints. For moving joints, see “Expansion Joint Treatment.”

Numbering shows order of installation.

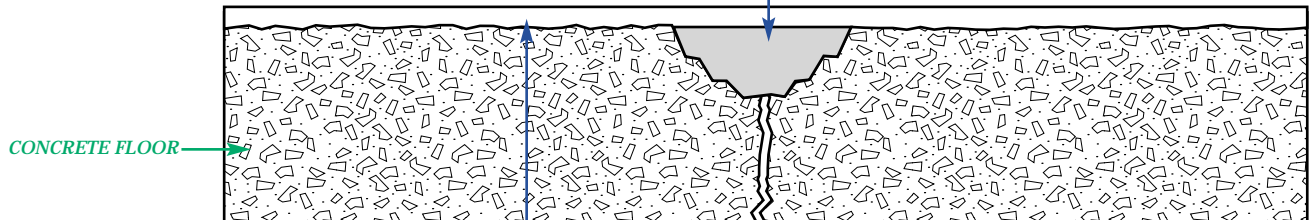
- 1) CHASE JOINT TO CLEAN WITH DIAMOND SAW 1/4" WIDE BY 1" DEEP



- 2) CHIP AWAY ANY LOOSE CONCRETE ON EITHER SIDE OF SAWCUT.

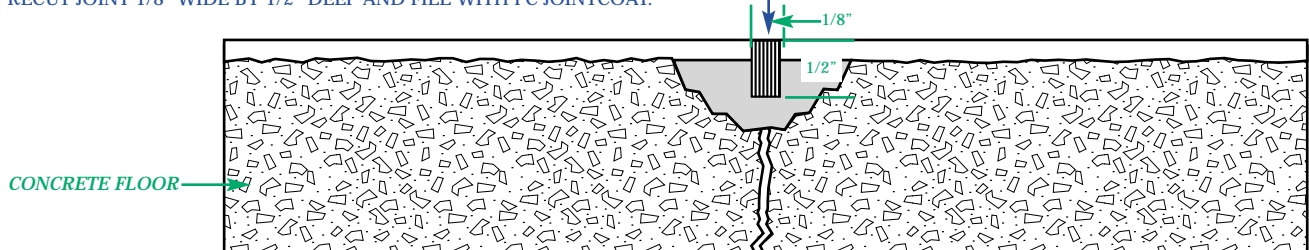


- 3) FILL IN VOID WITH PC GELCOAT.



- 4) INSTALL PC FLOORING SYSTEM.

- 5) RECUT JOINT 1/8" WIDE BY 1/2" DEEP AND FILL WITH PC JOINTCOAT.



Non-exposed Joint

If customer does not want to see the joints, then follow the process below:

- 1) CHASE JOINT TO CLEAN WITH DIAMOND SAW 1/4" WIDE BY 1" DEEP.
- 2) INSTALL BACKER ROD IN COMPRESSION AND FILL VOID WITH PC JOINTCOAT.
- 3) INSTALL PC FLOOR SYSTEM OVER JOINT.